

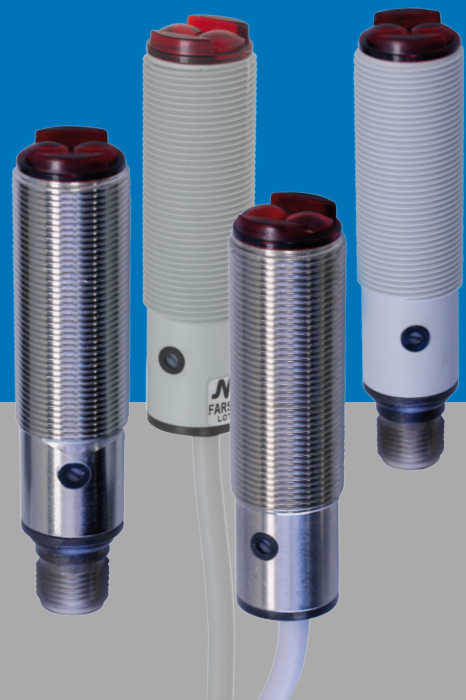


# Micro Detectors

Italian Sensors Technology



M18 direct reflection  
Photoelectric Sensor  
with adjustable background  
suppression FARS -7712  
(special version for shiny objects)



Photoelectric Sensor  
Data sheet

Cod. CAT3EFA1257601

Datasheet - FARS-7712 - English - Ed.01/2012



## GENERAL DESCRIPTION

TECHNICAL SPECIFICATIONS (in conformity with 2004/108/EC directives, according to European law IEC 60947-5-2 amendments (Edition 3.0, 2007-10))

## ELECTRICAL DIAGRAMS OF THE CONNECTIONS

## DIMENSIONS

## RESPONSE DIAGRAM

## DIMENSIONS AND PLUG

Copyright:

M.D. Micro Detectors S.p.A.  
con Unico Socio

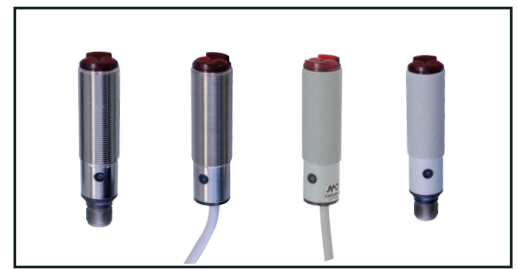
Strada S. Caterina 235  
41122 Modena - Italy

tel. + 39 059 420411  
fax + 39 059 253973  
info@microdetectors.com  
www.microdetectors.com



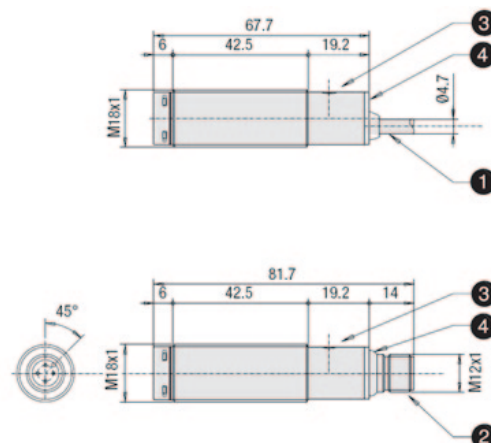
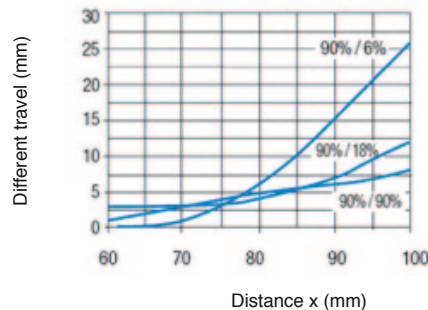
# FARS-7712

- Special model for shiny objects  
60 to 100 mm sensing distance
- Power supply: 10-30 Vdc,  
output current 100 mA
- Protection degree IP67
- Complete protection against electrical damages



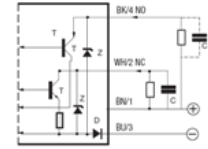
Model	FARS/**_**7712
Type	Background suppression
Nominal sensing distance (Sn)	60 - 100 mm
Tolerance	+15/-5% Sn
Type of light	Red (660 nm)
Repeatability	10%
Operating voltage	10...30 Vcc
Ripple	≤ 10%
Current consumption	40 mA
Load current	100 mA
Leakage current	10 μA (Vcc max.)
Output voltage drop	2 V max. (100mA)
Output type	PNP/NPN; L+D; NO/NC selectable
Switching frequency	400 Hz
Response time	200 ms
Distance adjustment	potentiometer
Immunity to external light	5,000 lux (incandescent light) 10,000 lux (sunlight) yellow / light status short circuit / internal error
LED indicators	yellow (output energized)
Housing material	nickel-plated brass or PBT (plastic)
Optical material	PMMA

Scanning range

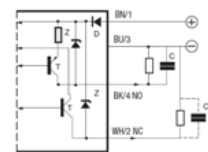


- 1) Axial cable output
- 2) Radial M12 plug cable output
- 3) Potentiometer for sensitivity adjustment
- 4) LED

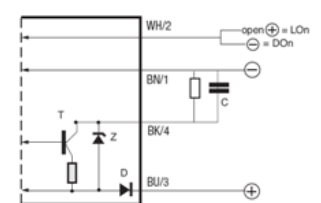
Complementary output  
NO + NC/ NO + NC: NPN output



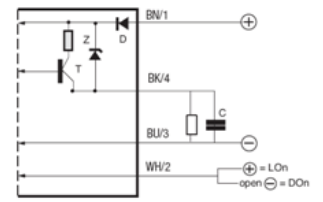
Complementary output  
NO + NC/ NO + NC: PNP output



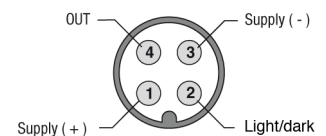
LO/DOselectable output  
NPN output



LO/DO selectable output  
PNP output



M12 4 wires light on - dark on  
selectable



M12 4 wires output complementary  
NO and NC

